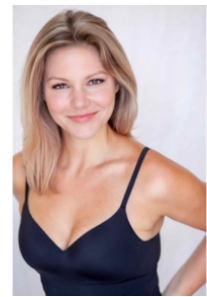


COLLEEN GRATE

AEA

Hair: Blonde
 Eyes: Hazel
 Height: 5'7"
 Range: Soprano (to high E)
 Belt (to high G#)

colleengrate@gmail.com
 www.colleengrate.com



NATIONAL TOUR

My Fair Lady	Ensemble, u/s Eliza Doolittle*	Lincoln Center Theatre Production	<i>dir. Bartlett Sher</i>
	<i>*performed</i>		

NEW YORK THEATRE

Camelot (benefit performance)	Ensemble	Lincoln Center Theatre	<i>dir. Bartlett Sher</i>
Louisiana Purchase	Quartet Soprano	Musicals Tonight!	<i>dir. Donald Brenner</i>
Dangerous to Dance With	Jill	Dream Up! Festival	<i>dir. Gerald van Heerden</i>

REGIONAL THEATRE

Between the Lines (world premiere)	Marina	Kansas City Repertory Theatre	<i>dir. Jeff Calhoun</i>
Sweeney Todd	Ensemble, u/s Johanna, Beggar W.	Kansas City Repertory Theatre	<i>dir. Eric Rosen</i>
A Christmas Carol	Belle	Kansas City Repertory Theatre	<i>dir. Jerry Genochio</i>
Sunday in the Park with George	Celeste 1/ Dance Capt.	Kansas City Repertory Theatre	<i>dir. Eric Rosen</i>
Heathers the Musical	Heather Mac/ Dance Capt.	Unicorn Theatre	<i>dir. Cynthia Levin/Missy Koonce</i>
Priscilla Queen of the Desert	Diva/ Dance Capt.	Unicorn Theatre	<i>dir. Cynthia Levin/Missy Koonce</i>
The Marvelous Wonderettes	Missy	American Heartland Theatre	<i>dir. Jay Cranford</i>
Cabaret	Kit Kat Girl	Kansas City Repertory Theatre	<i>dir. Eric Rosen</i>
The Secret Garden	Lily	Okoboji Summer Theater	<i>dir. Bernard Monroe</i>
Honky Tonk Angels	Darlene	American Heartland Theatre	<i>dir. Paul Hough</i>
Little Shop of Horrors	Chiffon/ Dance Capt.	Kansas City Repertory Theatre	<i>dir. Kyle Hatley</i>
Saved	u/s Lana, Tia	Kansas City Repertory Theatre	<i>dir. Gary Griffin</i>
The 25 th Annual...Spelling Bee	Rona Lisa	American Heartland Theatre	
Jesus Christ Superstar	Ensemble	K.C. Starlight Theatre	
Footloose	Ensemble	K.C. Starlight Theatre	

TRAINING

Stephens College: B.F.A. Theatre Performance

Voice: Catherine Gamble, Nancy Snow-Carr, Eddie Schneckner

Acting: David Brunetti, Lamby Hedge, Geno Carr, Rob Doyen

Dance: *Ballet, Tap, Jazz*

Improv: The PIT

SPECIAL SKILLS

Sight reading. Basic Piano (chording). Munchkin Voices. Accents: Southern, British RP, Irish, Excellent Ear! Strong attention to detail.